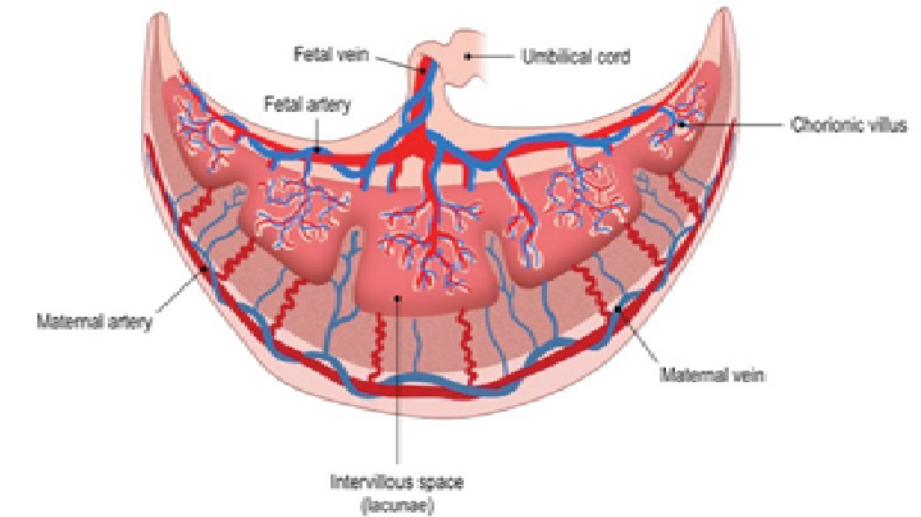
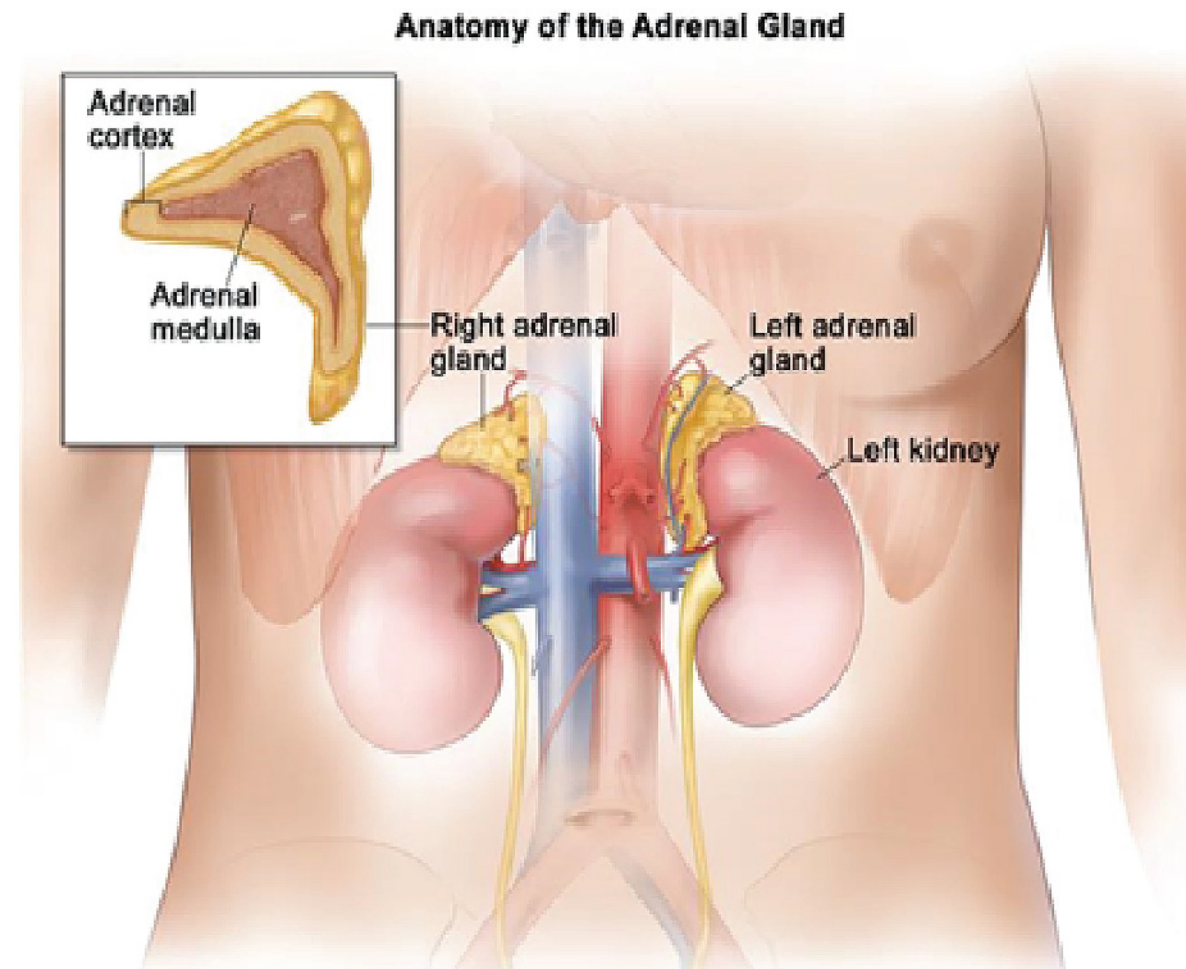


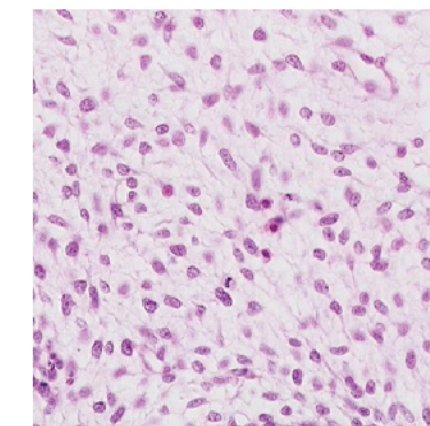
Introduction

Kidney damage affects blood flow, glomerular function, tubular function and abnormal urine composition triggers the development of kidney stones.

- 1 **Kidney**
Help filter blood before sending it back to the heart, maintaining overall fluid balance, regulating and filtering minerals from blood, filtering waste materials from food, medications, and toxic substances, creating hormone that help to produce red blood cells, promote healthy bone and regulate blood pressure
- 2 **Adrenal Cortex**
The outer part of the adrenal gland. The adrenal cortex makes androgen and corticosteroid hormones

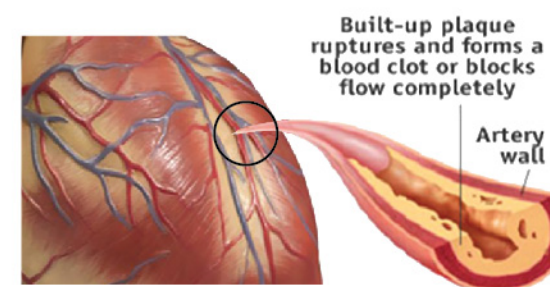


- 3 **Placenta**
It develops during pregnancy. It is attached to the wall of the uterus. Blood passes through placenta, filtering oxygen, glucose and other nutrition. It also filters out substances that could be harmful to the body



- 4 **Mesenchyme**
Comprised of loose cells embedded in a mesh of proteins and fluid called the extracellular matrix. It play a crucial role in the origin and development of morphological structure during the embryonic and fetal stages. It directly gives rises to most of body connective tissues, from bones and cartilage to the lymphatic and circulatory system

- 5 **Artery**
Blood vessels that are responsible for carrying oxygenated blood through the body



The Recommended Targeted Precursor Brain Stem Cells for Kidney

- 1 **Kidney**
- 2 **Adrenal Cortex**
- 3 **Placenta**
- 4 **Artery**
- 5 **Mesenchyme**