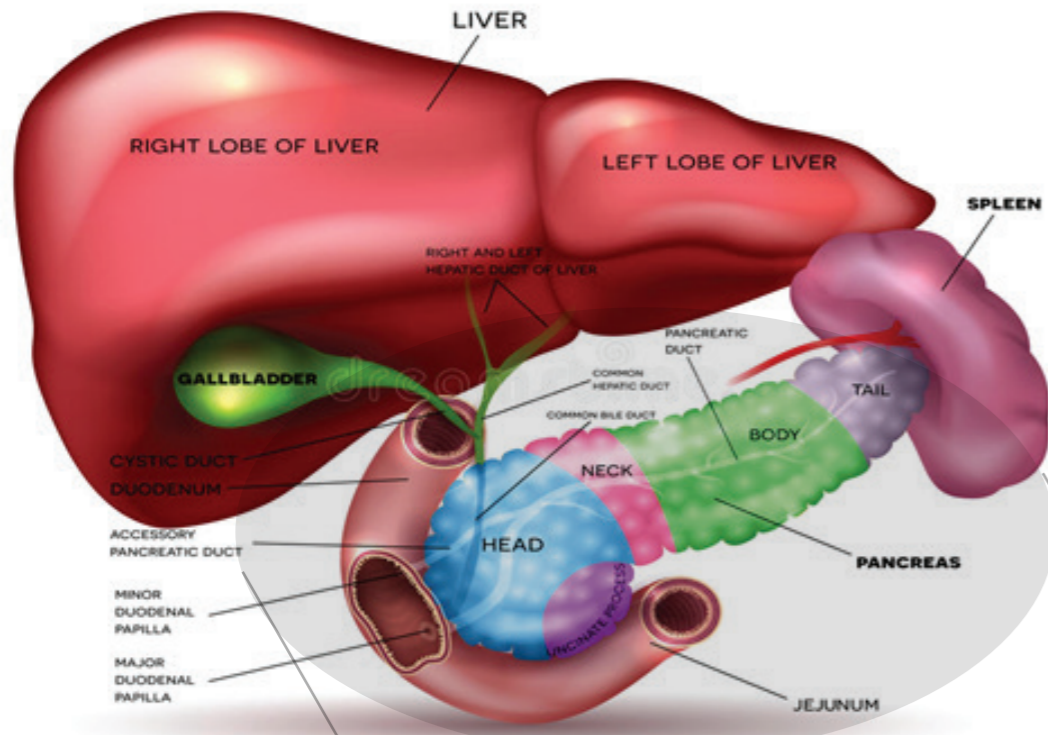


## Introduction

Multiple sclerosis (MS) is a condition which can affect the brain and/or spinal cord, causing a wide range of potential symptoms, including problems with vision, arm or leg movement, sensation or balance.

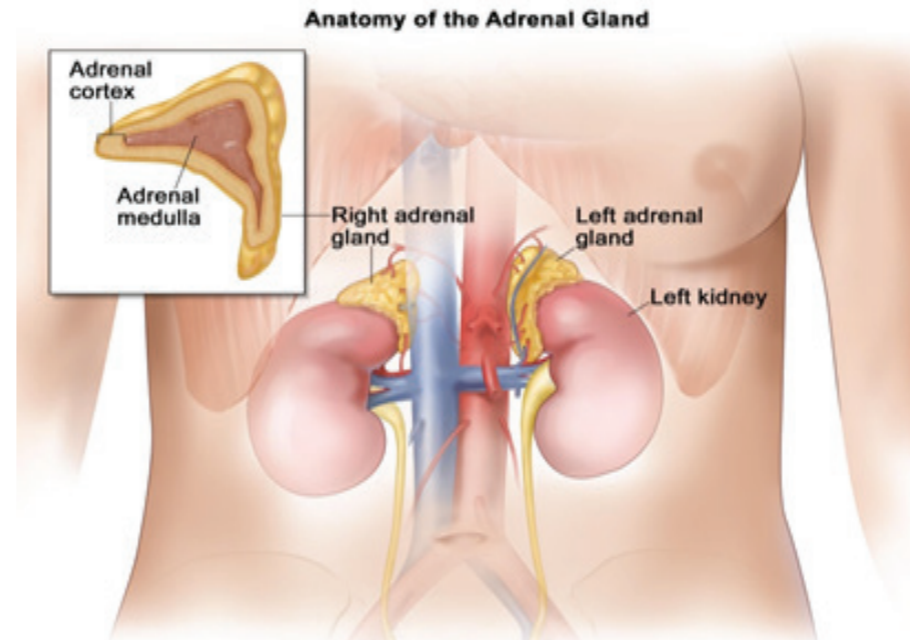
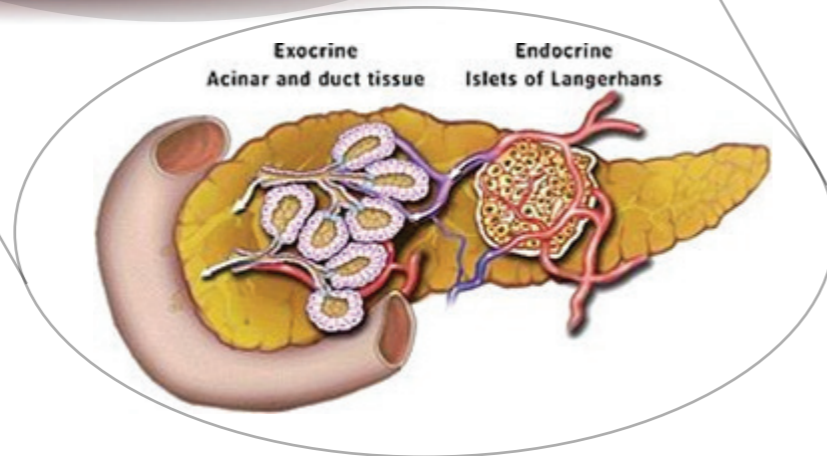


### 1 Liver

Responsible for making proteins, blood clotting factors, manufacturing triglycerides and cholesterol, glycogen synthesis and bile production

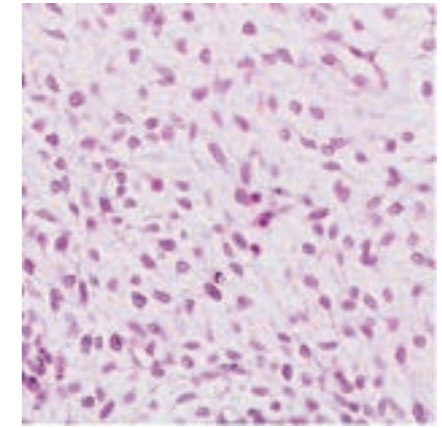
### 2 Exocrine Pancreas

The bulk of the pancreas is composed of "exocrine" cells that produce enzymes to help with the digestion of food. It releases their enzymes into a series of progressively larger tubes (called ducts) that eventually join together to form the main pancreatic duct



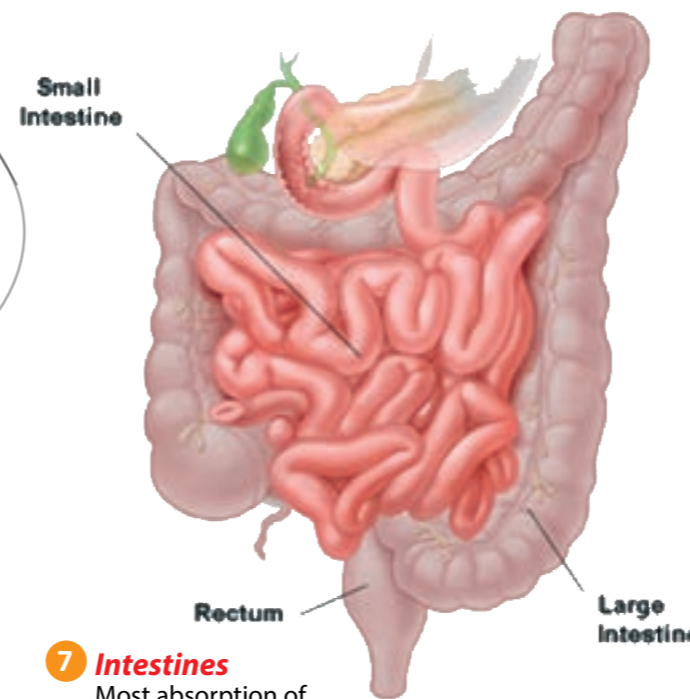
### 3 Adrenal Cortex

The outer part of the adrenal gland. The adrenal cortex makes androgen and corticosteroid hormones



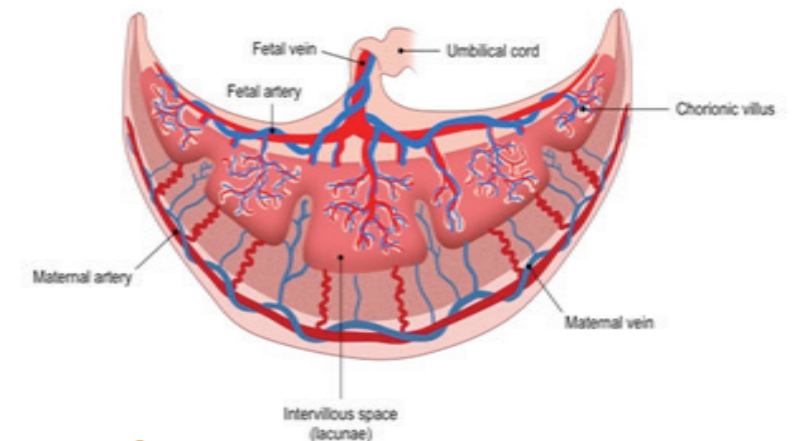
### 4 Mesenchyme

Comprised of loose cells embedded in a mesh of proteins and fluid called the extracellular matrix. It play a crucial role in the origin and development of morphological structure during the embryonic and fetal stages. It directly gives rise to most of body connective tissues, from bones and cartilage to the lymphatic and circulatory system



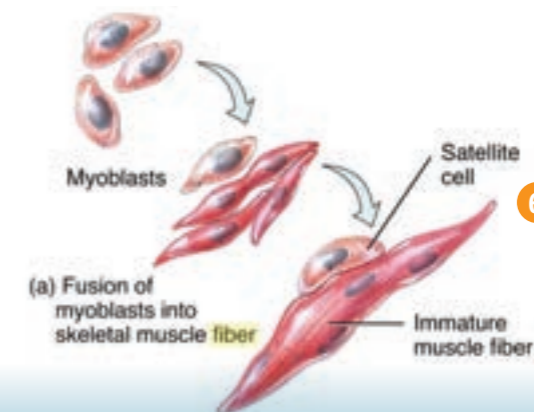
### 7 Intestines

Most absorption of nutrients and water happen in the intestines. The intestines include the small intestine, large intestine, and rectum



### 5 Placenta

It develops during pregnancy. It is attached to the wall of the uterus. Blood passes through placenta, filtering oxygen, glucose and other nutrition. It also filters out substances that could be harmful to the body



### 6 Peripheral myoblast

Type of embryonic progenitor cell that differentiates to give rise to muscle cells

## The Recommended Targeted Precursor Stem Cells for Multiple Sclerosis

- |                     |                       |
|---------------------|-----------------------|
| 1 Liver             | 5 Placenta            |
| 2 Exocrine Pancreas | 6 Peripheral Myoblast |
| 3 Adrenal Cortex    | 7 Intestine           |
| 4 Mesenchyme        |                       |