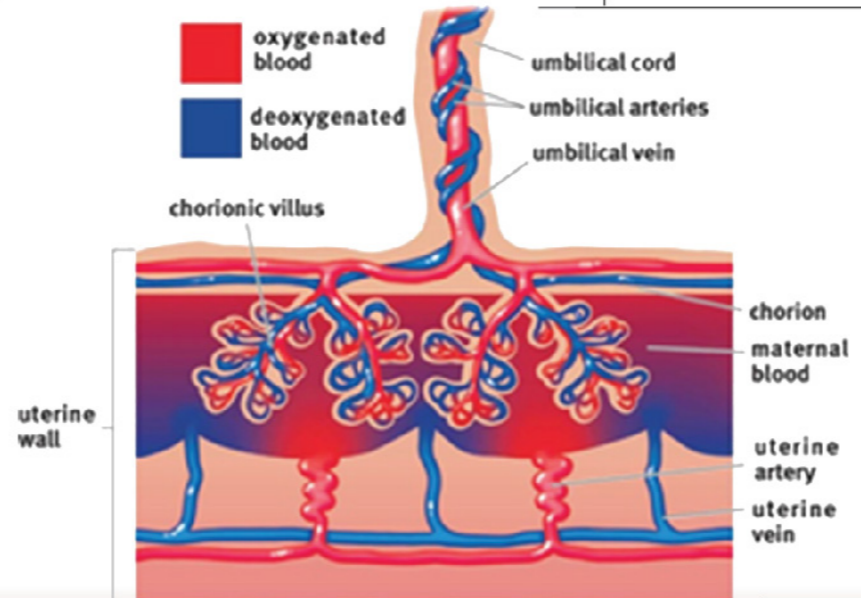
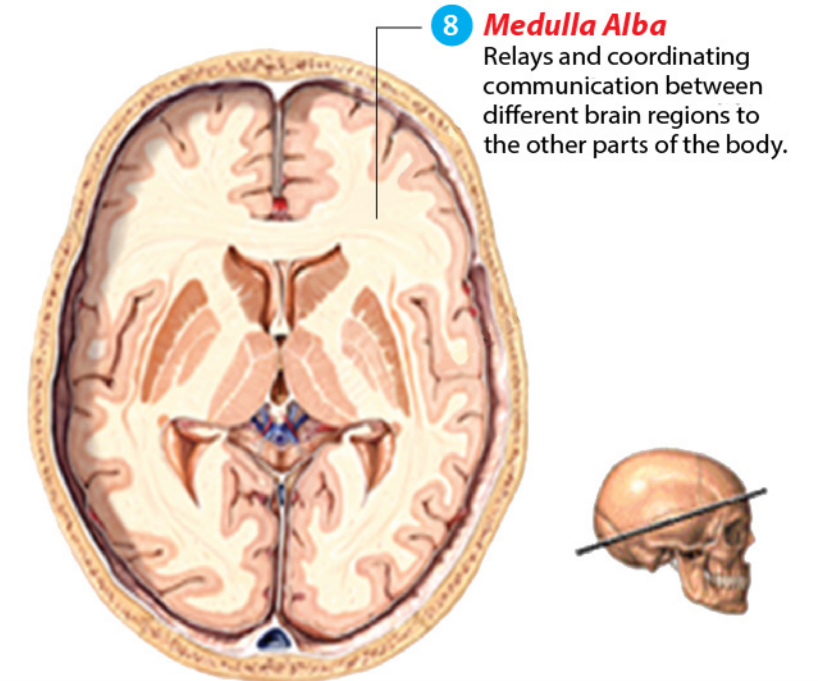
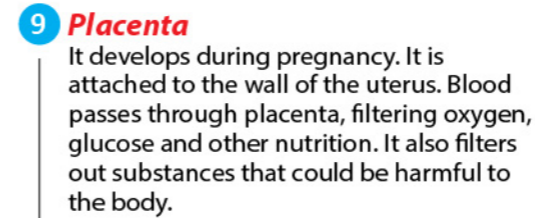
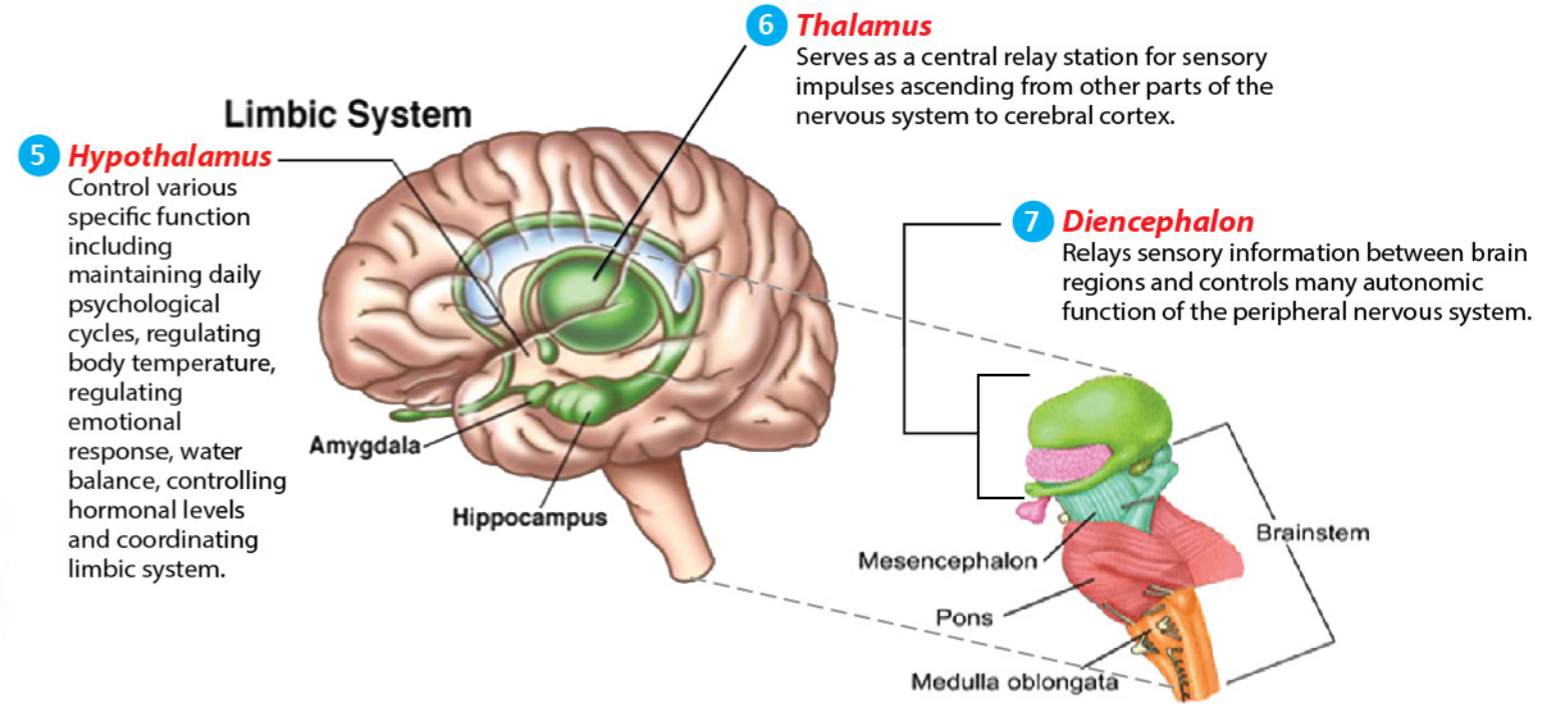
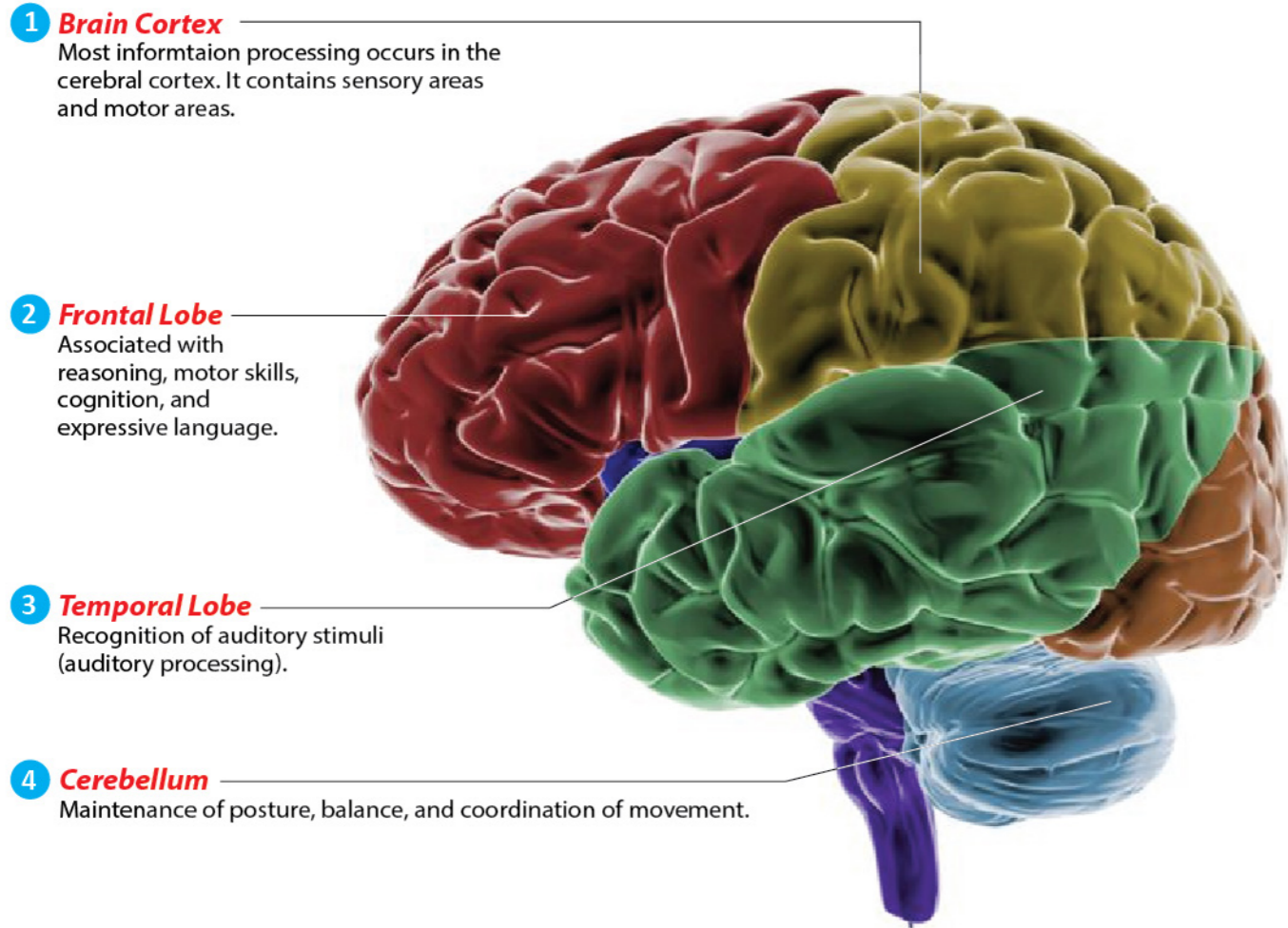


TARGETED PRECURSOR (PROGENITOR) STEM CELLS FOR ALZHEIMER'S DISEASE

Introduction

Alzheimer's disease is a progressive disease that destroys memory and other important mental functions. It is a group of brain disorders that cause the loss of intellectual and social skills. In Alzheimer's disease, the brain cells degenerate and die, causing a steady decline in memory and mental function.



- The Recommended Targeted Precursor Stem Cells for Alzheimer's Disease**
- | | |
|------------------------|------------------------|
| 1 Brain Cortex | 6 Thalamus |
| 2 Frontal Lobe | 7 Diencephalons |
| 3 Temporal Lobe | 8 Medulla Alba |
| 4 Cerebellum | 9 Placenta |
| 5 Hypothalamus | |